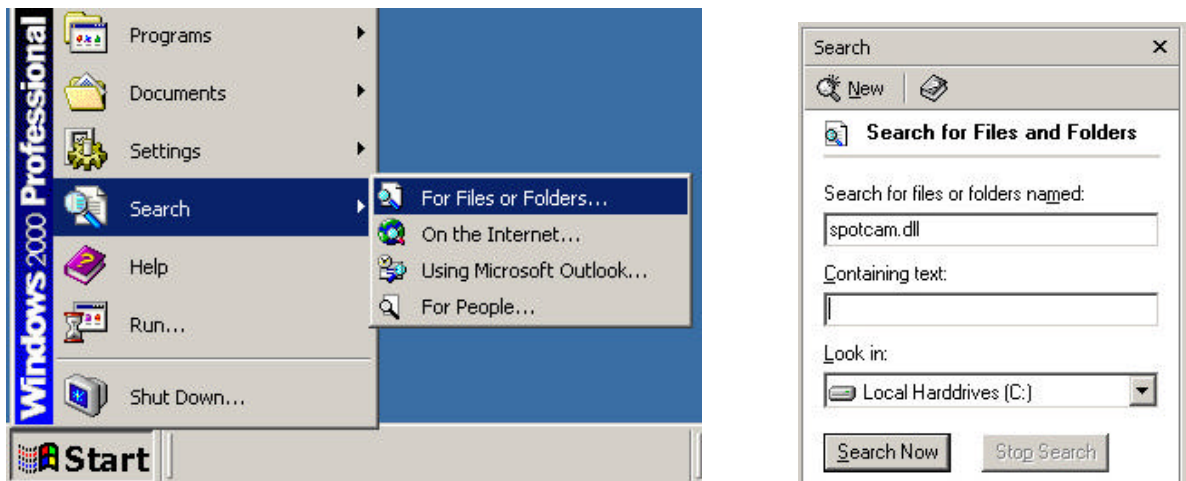


## Preface

This document is intended to aid in the installation and use of the SPOT camera driver. The driver is used in conjunction with third party applications to allow control of any SPOT camera. The documentation is divided into three sections, each section contains instructions for installing the SPOT camera driver on different operating systems. The three operating systems are Microsoft Windows (ex. Windows 9x/ME or NT based), Mac OS 9.x or below and Mac OS X or higher.

## Microsoft Windows

Download the Windows version of the SPOT camera driver. After downloading the driver extract the contents of the zip file into a new folder on your hard drive. Next go to the Start menu and pick “Search Files or Folders...” as shown below. In the search field enter the text “spotcam.dll” without the quotes. Choose all local drives in the Look In field. Now start the search. The search may take a while so be patient. After the search has finished you should have a listing of one or more spotcam.dll in your search. Locate each files path and replace the file with the SpotCam.dll that was downloaded. Take note that the search should also find the SpotCam.dll that you downloaded as well so you will not be able to replace that file with itself.



Once you have finished the previous step you can now go to the folder where you extracted the contents of the zip file and go into the subfolder named “Update Hardware Drivers”. Once you are there double click on the file named “CopyFiles.exe”. After the utility finishes restart your computer to enable the changes.

## Mac OS 9.x and earlier

Download the Mac version of the SPOT Camera driver and extract the file using Stuffit Expander. Once the file is extracted place the file into the following location.

**[system drive]:System:Extensions**

## Mac OS X and above

Download the Mac version of the SPOT Camera driver and extract the file using Stuffit Expander. Once the file is extracted place the file into the following location.

**/System/Extensions**